

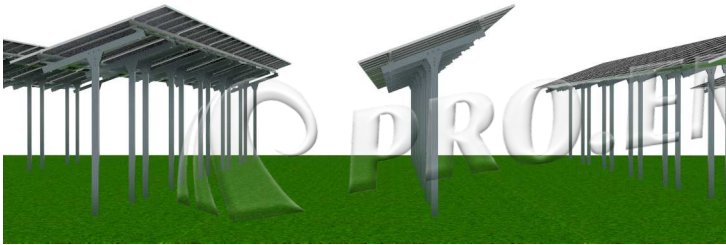
# Agri PV Mounting PV System

## Frame Agri PV mounted structure

- A popular type in the market It is possible to achieve a large span without columns, thereby increasing space utilization.
- Suitable for full mechanization
- Screw pile foundation for ease piling



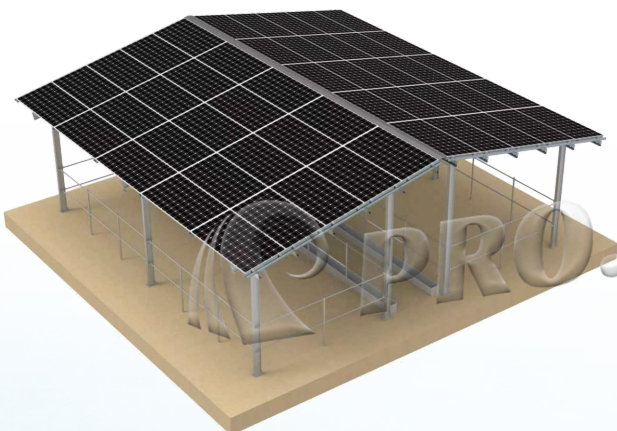
## Single-column Agri PV mounted structure



- Simple structure facilitates ease installation
- Farm machines can drive between the individual row and cultivate the land.
- Crops such as grape vine, which require ample sunlight, can be planted between rows to optimize growth conditions.

## Vertically mounted structure

- PV fences with bifacial double glass modules
- Well suited for fencing livestock pastures
- Large farm machines can pass between the fence rows



## Cowshed

- Easy construction and maintain low costs
- Sufficient spacing allows the cows to move freely
- Protect cows from the severe weather
- Solar powering the milking machine and pressure wash



# projects

